

# Sarpette® M

Systematic pipetting



Try it out for  
free & without  
obligation!



[sarpette.sarstedt.com](https://sarpette.sarstedt.com)



**SARSTEDT**

# A PERFECT MATCH

- ✓ Compatible and compliant
- ✓ Robust and reliable
- ✓ Everything from one source



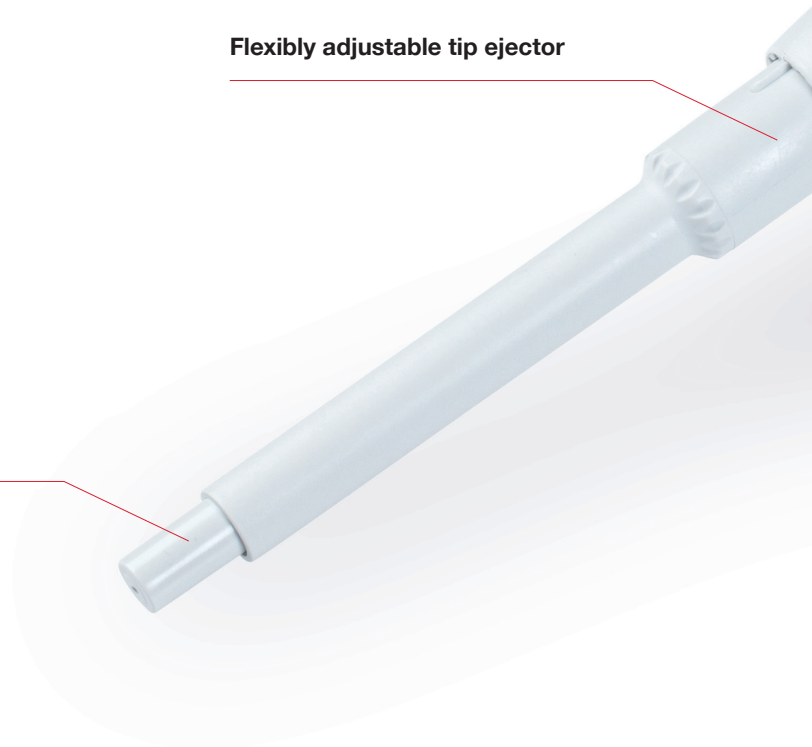
## Sarpette® M - Systematic Pipetting

SARSTEDT has been producing precision pipette tips for more than 50 years. Thanks to this long-standing experience, and technological expertise as well as true to the motto: "Everything from a single source", we have developed the new Sarpette® M, an innovative micro litre pipette that is perfectly tailored to today's applications in the laboratory.

Sustainability and environmentally responsible behaviour are gaining an increasing importance in these days and age.

**Flexibly adjustable tip ejector**

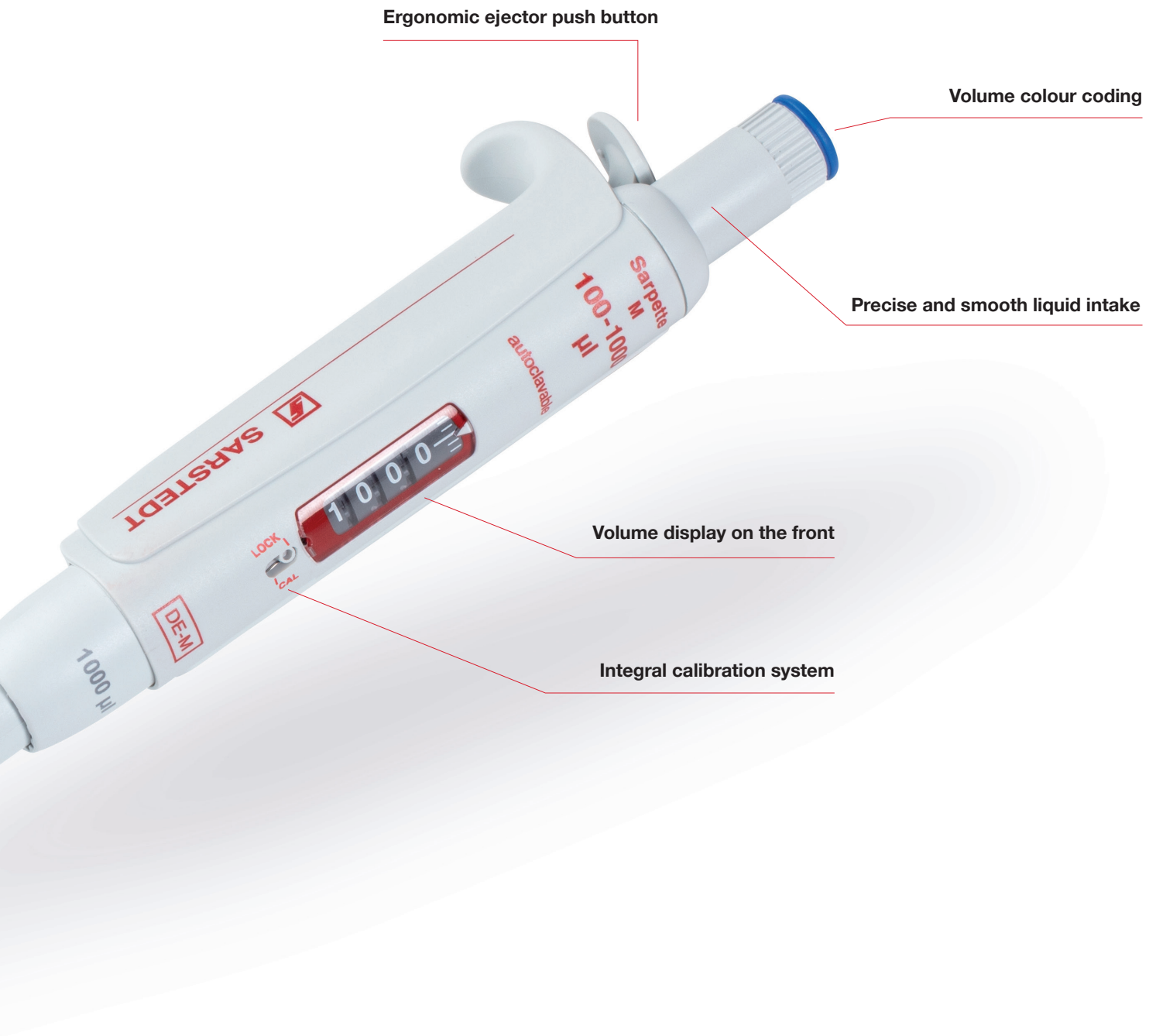
**Precision fit cone**



**SARSTEDT**

# Sarpette<sup>®</sup> M

For high-precision pipetting



Ergonomic ejector push button

Volume colour coding

Precise and smooth liquid intake

Volume display on the front

Integral calibration system



# ERGONOMIC DESIGN

- ✓ Free moving and smooth running pipetting push button
- ✓ Human-engineered and convenient ejection position
- ✓ Flexible and adjustable tip ejection



## User-friendliness is a Must

### Particularly ergonomic design

---

In daily applications, in research, diagnostics and in any laboratory, SARSTEDT precision pipettes stand out for their excellent characteristics. Benefit from exceptional ease of handling, lightness and durability.



**SARSTEDT**



### Unique position of the ejector

---

The ejector directly above the hand rest enables a particularly favourable physiological mode of operation. Thanks to the large ejector push button and the smooth-running pipetting piston, the Sarpette® M guarantees particularly ergonomic pipetting, its light weight an added benefit to prevent RSI (repetitive strain injury).



### Ideal pipetting

---

Thanks to the flexibly adjustable tip ejector, you can easily adjust the ejector to the individual height of your pipette tips with just one turn and little effort. This makes the Sarpette® M compatible with a wide range of longer and shorter pipette tips also from other manufacturers.



# RELIABLE

- ✓ Fast and accurate volume adjustment
- ✓ Accurate and precise pipetting
- ✓ Simple and safe calibration



## Fast and safe

### Easy volume adjustment

To set the desired volume, simply turn the free-moving and precise adjustment knob.

Audible click-stops and the freely rotatable thumb rest prevent unintended self-adjustment.







### Precise and accurate

---

Exact pipetting results are a given fact with the Sarpette® M. SARSTEDT pipette tips and your Sarpette® M provide a perfect match for all areas of application.



### Calibration in a flash

---

Awkward calibration is a thing of the past. With the calibration system of the SARSTEDT Sarpette® M, you can now calibrate your Sarpette® M yourself - quickly and safely. The precise system conforms to all international standards.



# ROBUST

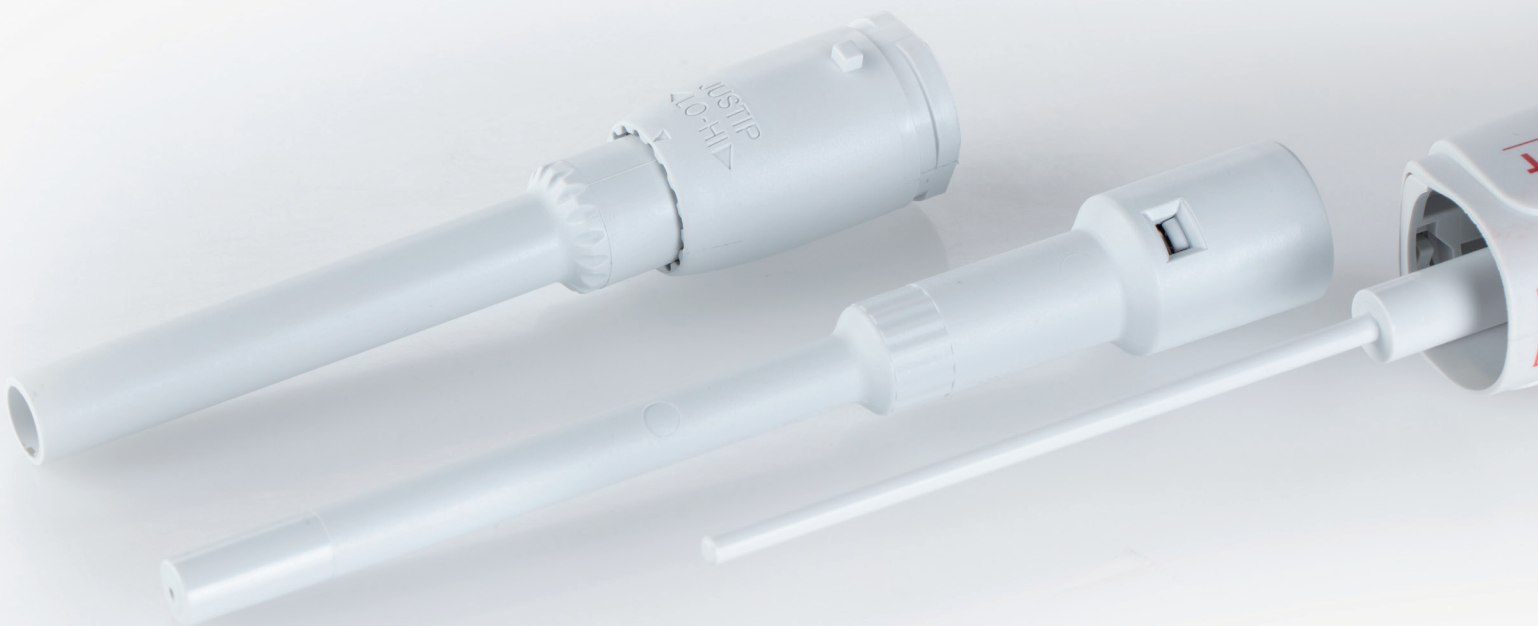
- ✓ Strong and durable construction
- ✓ Autoclavable and UV-resistant
- ✓ Convenient and quick cleaning



## No compromises in the choice of materials

### Quick and easy disassembly

Disassemble your Sarpette® M within seconds. This allows you to clean and disinfect the pipette at any time. Convenient and quick cleaning makes contamination-free and safe pipetting even easier.



**SARSTEDT**

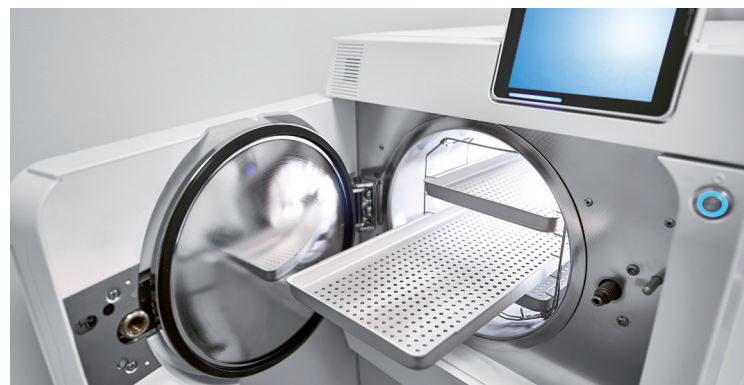




### Fully autoclavable

---

The Sarpette® M can be easily autoclaved at 121°C. The pipette is extremely resistant to chemicals and UV exposure.



### Stable and durable construction

---

Thanks to the carefully matched materials and excellent workmanship of the Sarpette® M, we can guarantee a warranty period of 3 years.



# ORDERING INFORMATION



## Sarpette® M performance values

Order no.	Volume Volume range	Graduation	Inaccuracy (E%)			Imprecision (CV%)		
			Min. vol.	Med. vol.	Max. vol.	Min. vol.	Med. vol.	Max. vol.
90.3100.002	0.1 - 2 µl	0.002 µl	<+/- 6.0 % <sup>1</sup>	<+/- 4.0 %	<+/- 2.0 %	< 5.0 % <sup>1</sup>	< 3.3 %	< 1.5 %
90.3100.010	0.5 - 10 µl	0.01 µl	<+/- 2.5 % <sup>2</sup>	<+/- 1.8 %	<+/- 1.0 %	< 1.8 % <sup>2</sup>	< 1.2 %	< 0.5 %
90.3100.020	2 - 20 µl	0.02 µl	<+/- 2.5 %	<+/- 1.8 %	<+/- 1.0 %	< 1.7 %	< 1.0 %	< 0.5 %
90.3100.100	10 - 100 µl	0.1 µl	<+/- 1.5 %	<+/- 1.2 %	<+/- 0.8 %	< 1.0 %	< 0.6 %	< 0.2 %
90.3100.200	20 - 200 µl	0.2 µl	<+/- 1.5 %	<+/- 1.1 %	<+/- 0.6 %	< 0.6 %	< 0.4 %	< 0.2 %
90.3100.000	100 - 1,000 µl	1 µl	<+/- 1.5 %	<+/- 1.0 %	<+/- 0.5 %	< 0.5 %	< 0.4 %	< 0.2 %
90.3100.555	0.5 - 5 ml	0.01 µl	<+/- 1.5 %	<+/- 1.1 %	<+/- 0.6 %	< 0.6 %	< 0.5 %	< 0.3 %
90.3100.111	1 - 10 ml	0.01 µl	<+/- 1.5 %	<+/- 0.7 %	<+/- 0.5 %	< 0.5 %	< 0.3 %	< 0.2 %

The performance values were determined using distilled water at a constant temperature ( $\pm 0.5$  °C) between 20 and 25 °C in accordance with ISO 8655.

1) measured at 0.5 µl

2) measured at 1 µl

## Sarpette® M8 / M12 performance values

Order no.	Volume			Inaccuracy (E%)			Imprecision (CV%)		
	Volume range	Graduation	Anzahl Kanäle	Min. vol.	Med. vol.	Max. vol.	Min. vol.	Med. vol.	Max. vol.
90.3108.010	0.5 - 10 µl	0.01 µl	8	<+/- 3.5 % <sup>1</sup>	<+/- 2.5 %	<+/- 1.5 %	< 3.0 % <sup>1</sup>	< 2.0 %	< 1.0 %
90.3108.200	20 - 200 µl	0.2 µl	8	<+/- 0.9 % <sup>1</sup>	<+/- 0.8 %	<+/- 0.7 %	< 0.6 % <sup>1</sup>	< 0.5 %	< 0.3 %
90.3108.300	40 - 300 µl	0.4 µl	8	<+/- 1.0 % <sup>1</sup>	<+/- 0.9 %	<+/- 0.8 %	< 0.6 % <sup>1</sup>	< 0.5 %	< 0.3 %
90.3112.010	0.5 - 10 µl	0.01 µl	12	<+/- 3.5 % <sup>1</sup>	<+/- 2.5 %	<+/- 1.5 %	< 3.0 % <sup>1</sup>	< 2.0 %	< 1.0 %
90.3112.200	20 - 200 µl	0.2 µl	12	<+/- 0.9 % <sup>1</sup>	<+/- 0.8 %	<+/- 0.7 %	< 0.6 % <sup>1</sup>	< 0.5 %	< 0.3 %
90.3112.300	40 - 300 µl	0.4 µl	12	<+/- 1.0 % <sup>1</sup>	<+/- 0.9 %	<+/- 0.8 %	< 0.6 % <sup>1</sup>	< 0.5 %	< 0.3 %

The performance values were determined using distilled water at a constant temperature ( $\pm 0.5$  °C) between 20 and 25 °C in accordance with ISO 8655.

1) measured at 10 % nominal volume



### Sarpette® M ordering information

Description	Volume range [µl]	Order no.	Packaging	Compatible SARSTEDT pipette tips
Sarpette® M single-channel	0.1 - 2 µl	90.3100.002	1 pc./case	70.3010.xxx 70.3020.xxx 70.3021.xxx 70.3010.xxx
	0.5 - 10 µl	90.3100.010	1 pc./case	70.3020.xxx 70.3021.xxx 70.3030.xxx
	2 - 20 µl	90.3100.020	1 pc./case	70.3031.xxx 70.3030.xxx
	10 - 100 µl	90.3100.100	1 pc./case	70.3031.xxx 70.3030.xxx
	20 - 200 µl	90.3100.200	1 pc./case	70.3031.xxx 70.3050.xxx
	100 - 1,000 µl	90.3100.000	1 pc./case	70.3060.xxx 70.1183.102 70.1183.002
	0.5 - 5 ml	90.3100.555	1 pc./case	70.1187.102
Sarpette® M 8-channel	1 - 10 ml	90.3100.111	1 pc./case	70.1187.002 70.3010.xxx 70.3020.xxx
	0.5 - 10 µl	90.3108.010	1 pc./case	70.3021.xxx 70.3030.xxx
	20 - 200 µl	90.3108.200	1 pc./case	70.3031.xxx 70.3030.xxx
	40 - 300 µl	90.3108.300	1 pc./case	70.3031.xxx 70.3040.xxx
Sarpette® M 12-channel	0.5 - 10 µl	90.3112.010	1 pc./case	70.3010.xxx 70.3020.xxx 70.3021.xxx
	20 - 200 µl	90.3112.200	1 pc./case	70.3030.xxx 70.3031.xxx
	40 - 300 µl	90.3112.300	1 pc./case	70.3030.xxx 70.3031.xxx 70.3040.xxx

### Pipette holders for Sarpette® M ordering information

Description	Order no.	Packaging
Pipette holder, rotatable, for 6 SARSTEDT Sarpette® M single-channel pipettes up to 1,000 µl	95.1760.200	1 pc. / inner box 4 pcs. / case
Pipette holder, for 3 SARSTEDT Sarpette® M single- and multi-channel pipettes	95.1760.201	1 pc. / inner box 4 pcs. / case

Visit [www.refillrevolution.tips](http://www.refillrevolution.tips) for more information on the SARSTEDT pipette tip range.



## SARSTEDT AG & Co. KG

P.O. Box 12 20

D-51582 Nümbrecht

Phone: +49 2293 305 0

Fax: +49 2293 305 3992

[export@sarstedt.com](mailto:export@sarstedt.com)

[www.sarstedt.com](http://www.sarstedt.com)



**SARSTEDT**