

Safety-Heel® Newborn/Preemie – incision lancet

Heel puncture for premature and newborn babies



Maximum blood collection with minimal penetration depth

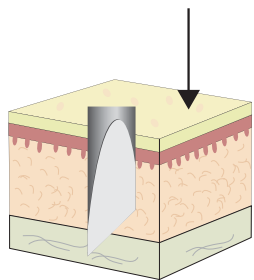
Metabolic diseases and endocrinopathies should be detected as early as possible in newborns so that the correct treatment can begin and be effective. A newborn screening blood collection has to be performed to do this, usually by puncturing the baby's heel. Puncture with conventional lancets is vertical, so the risk of injury (i.e. cutting right through to the bone) and hematoma is very high. This is often an uncomfortable procedure. The Safety-Heel® incision lancet helps reduce the pain experienced and thereby optimizes the blood collection process. The crescent-shaped incision path and shallow penetration depth minimize the formation of hematoma, and enables a much gentler blood collection.

Innovative high-speed lancet with crescent-shaped, gentle incision technique

- Optimum blood flow without additional rubbing or massage
- Adequate blood volume
- Significantly less pain
- Rapid healing due to low penetration depth
- Minimizes formation of hematoma

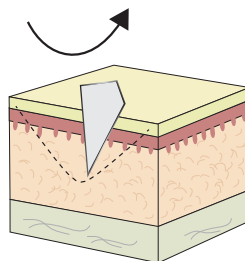


Safety-Heel® Newborn/Preemie – incision lancet



Standard lancet

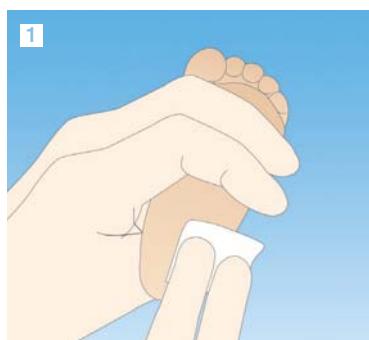
- **Vertical** firing direction of the sharp
- Cylindrical puncture
- Hematoma formation



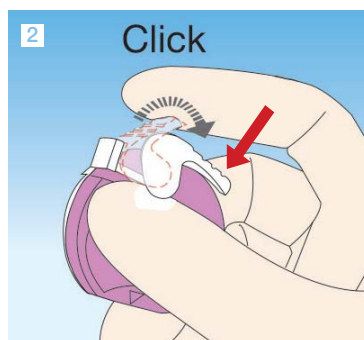
Incision lancet

- **Crescent-shaped** incision path
- Shallow penetration depth
- Minimizes formation of hematoma

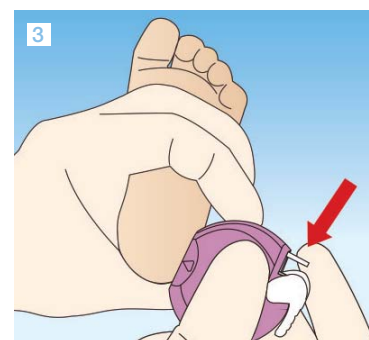
Handling the Safety-Heel® – incision lancet



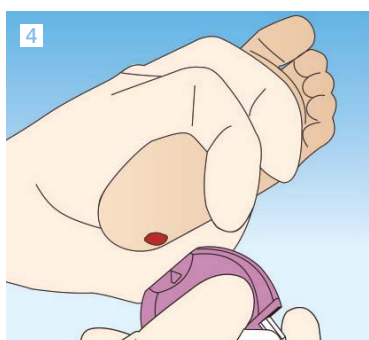
1 Select and disinfect a suitable puncture site.



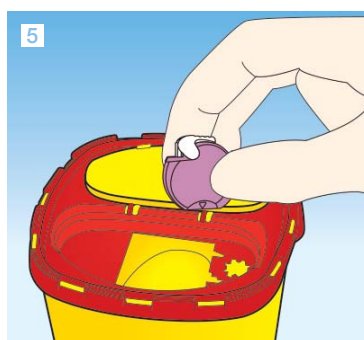
2 Pull back the white tensioning device using your index finger. The lancet is now ready for use.



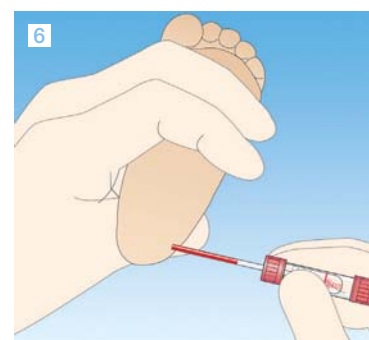
3 Lift the foot into a suitable position. Press the blade opening flat against the selected and disinfected puncture site and press the trigger button. The safety incision lancet must **always** be positioned and triggered **parallel to the length of the foot** (never across the heel)! The triangle points to the blade exit point.



4 After pressing the firing button, remove the lancet from the heel.



5 Dispose of the lancet in a suitable disposal box.



6 Discard the first drop of blood. Then fill the capillary blood collection tube.

Ordering information

	Art. no	Application	Penetration depth	Incision length	Packaging
●	85.1025	Premature babies	0.85 mm	1.75 mm	50/inner box 200/outer box
●	85.1026	Neonates	1.0 mm	2.5 mm	

SARSTEDT, Inc.
1025 St. James Church Road
P.O. Box 468
Newton, NC 28658 - 0468
Toll free: +1 800 257 5101
Fax: +1 828 465 4003
customerservice.us@sarstedt.com
www.sarstedt.com